

OLYMPUS

Peripheral Diagnostics Solutions for Access and Diagnosis of SPN



Peripheral Diagnostics

The diagnosis of peripheral pulmonary lesions has been a challenge over the past decades and the range of diagnostic procedures is wide. Olympus offers a complete solution to access, identify, and sample peripheral lesions.

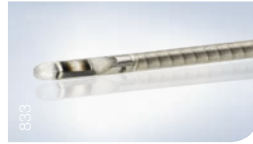
Probe Driving Unit – MAJ-1720

MAJ-1720 is designed to support a wide range of EUS and EBUS procedures, enabling the Olympus radial ultrasound miniature probes to be connected with an easy touch.



Radial Ultrasound Miniature Probe – UM-S20-17S

Designed to access even the narrowest lumina, this radial ultrasound miniature probe is compatible with the thin 2.0 mm diameter GuideSheath but also with the BF-MP190F. With an operating frequency of 20 MHz, this probe generates high-resolution 360° ultrasound images.



EVIS EUS

Universal Endoscopic Ultrasound Center – EU-ME2

The EU-ME2 brings real clarity to your EBUS procedures, supporting better detection and characterization of lesions. In addition, the EU-ME2 provides compatibility with linear and radial ultrasound endoscopes and radial ultrasound miniature probes.



Easy and Repeated Access to Peripheral Lung Regions

Olympus offers a choice of two bronchoscopic sampling solutions; the ultra-thin BF-MP190F scope, or a combination of a scope and the GuideSheath.

EVIS EXERA III

Video Bronchoscopes

While both methods facilitate approach to the peripheral lung areas, the BF-MP190F with its 1.7 mm diameter working channel enables sampling under direct visualization with the dedicated brush, forceps, and PeriView FLEX needle. Its 3.0 mm outer diameter further enhanced by the unique insertion tube rotation function facilitates direct access to peripheral lung regions.



BF-MP190F

GuideSheathKit

Acting as an extended working channel

Combined with a 2.0 mm or 2.8 mm working channel bronchoscope, the GuideSheath acts like an extended working channel, allowing safe and repeated access to the lesion with the dedicated needle, brush, and forceps.



GuideSheathKit compatible with 2.0 mm working channel

Dedicated Peripheral Sampling Devices

Peripheral Brush and Forceps

Dedicated brush and forceps for 1.7 mm working channel or GuideSheathKit



Brush and forceps compatible with 2.0 mm GuideSheath or with the BF-MP190F

Peripheral TBNA Needle PeriView FLEX

Olympus is now releasing a 21G needle dedicated to the periphery, compatible with either the BF-MP190F or the GuideSheath. The needle is expected to help to increase the diagnostic yield in the periphery as well as to improve access to target sites thanks to enhanced needle flexibility.



PeriView FLEX dedicated peripheral TBNA needle

Guiding Device

The bending and rotating mechanism enables the guiding device to access airways at difficult bifurcations.



Guiding device with bendable tip for easier access to target airways

Peripheral Diagnostics

Specifications at a Glance

Video Bronchoscopes			
	BF-P190	BF-MP190F	BF-XP190
Insertion Tube OD (mm)	4.1	3.7	2.8
Distal End OD (mm)	4.2	3.0	3.1*
Channel ID (mm)	2.0	1.7	1.2
Bending (Up/Down)	210°/130°	210°/130°	210°/130°
Rotation Function (Left/Right)	120°/120°	120°/120°	120°/120°
Working Length (mm)	600	600	600
Field of View	110°	90°	110°
Depth of Field (mm)	2-50	2-50	2-50
NBI	✓	✓	✓
Comments	OT	OT	OT

OT = One-Touch Connector *Tapered part of distal end 2.9 mm

Ultrasonic Miniature Probes		
	UM-S20-17S	UM-S20-20R
Frequency (MHz)	20	20
Working Length (mm)	2150	2050
Min. Working Channel Ø	1.7 mm	2.0 mm
Compatible GuideSheathKit	K-201 / K-202	K-203 / K-204
Scanning Mode	Mechanical radial	Mechanical radial

GuideSheathKit				
Model Name	K-201	K-202	K-203	K-204
Min. Working Channel Ø	2.0 mm	2.0 mm	2.6 mm	2.6 mm
GuideSheath ¹	SG-200C	SG-200C	SG-201C	SG-201C
Specification	Radiopaque distal tip for clear visibility under X-ray			
Biopsy Forceps	FB-233D	FB-233D	FB-231D	FB-231D
Specification	Oval, fenestrated cups		Oval, fenestrated cups, swinging type	
Cytology Brush	BC-204D-2010	-	BC-202D-2010	
Specification	Brush diameter Ø 2 mm, brush length 10 mm			
EndoTherapy (ET) Stopper	3 pcs (white)		2 pcs (gray) + 1 pc. (white)	
Ultrasound (US) Stopper	1 pc. (white)		1 pc. (gray)	

Guiding Device		
Model Name	CC-6DR-1	CC-220DR
Min. Working Channel Ø	2.0 mm	2.0 mm
Specification	Reusable	Single-use
Compatible GuideSheathKit	K-201, -202, -203, -204	

Peripheral Sampling Devices			
Model Name	PeriView FLEX Needle NA-403D-2021	Brush BC-205D-2010 ²	Biopsy Forceps FB-433D ³
Min. Working Channel Ø	1.7 mm	1.7 mm	1.7 mm
Working Length	1150 mm	1150 mm	1150 mm
Needle Outer Diameter	21G	-	-
Needle Length	20 mm	-	-

¹ The GuideSheath is not compatible with the BF-MP190F.

² Same specification as the BC-204D-2010. Sold independently.

³ Same specification as the FB-233D. Sold independently.

More information can be found in our comprehensive EndoTherapy catalog or at www.olympus.eu/et-catalog

Subject to change without notice. No liability for errors or omissions.

OLYMPUS

OLYMPUS EUROPA SE & CO. KG
 Postbox 10 49 08, 20034 Hamburg, Germany
 Wendenstrasse 14-18, 20097 Hamburg, Germany
 Phone: +49 40 23773-0, Fax: +49 40 233765
www.olympus-europa.com

