

Bed head units



Why choose MZ Liberec?



Design - Ergonomics - Maintenance - Modularity

- Light aluminium construction, smooth surface simplifies product cleaning and disinfection
- Colour may be adapted to the interior design
- Broad range of additional accessories available



Functions and features

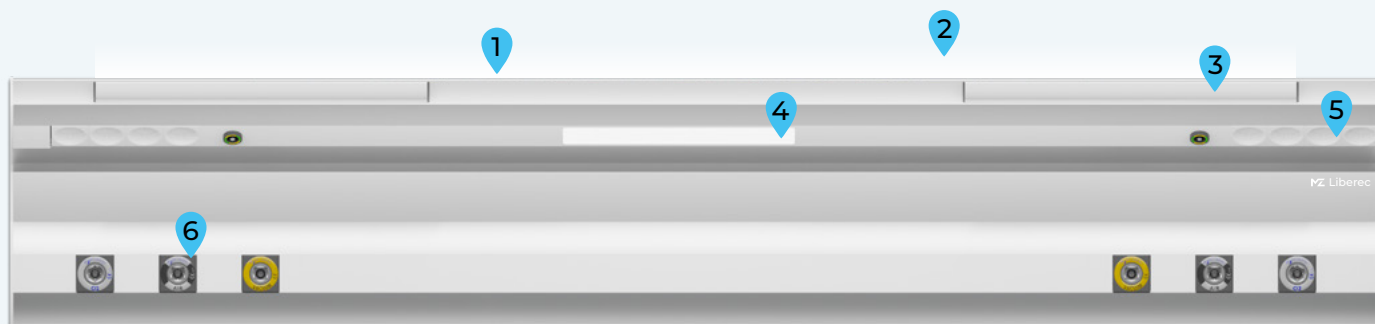
MZ Liberec bed head units are unmistakable for their design, variability and modularity. A custom design allows you to adapt the appearance to the overall interior and to the needs of the medical staff.

A. electric channel

B. gas channel

Technical properties

- Bed head units are primarily designed for in-patient rooms in healthcare facilities.
- They contain outlets for medical gases, high and low-voltage electrical outlets.
- Direct, indirect and night lighting may be also attached.
- May be equipped with medical rail-mounted accessories as well..



energy-saving LED lighting

1. indirect lighting

2. night lighting

3. medical rail

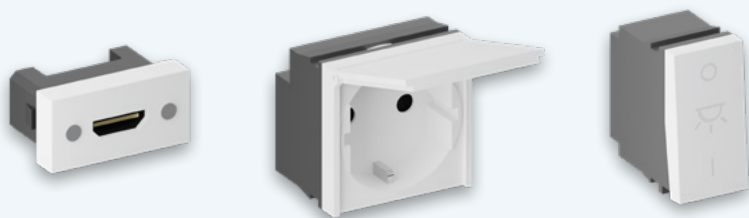
4. direct lighting

5. electrical outlet

6. gas outlet

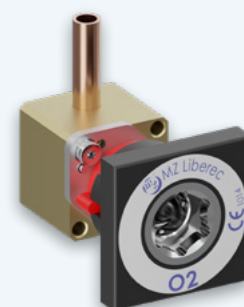
Integrated electrical equipment

The embedded design makes cleaning and disinfection simple



Gas outlets

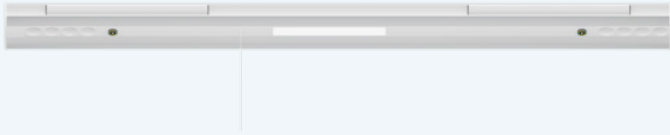
Standards: ČSN, DIN, AFNOR, BS, AGA



Models

Horizontal design

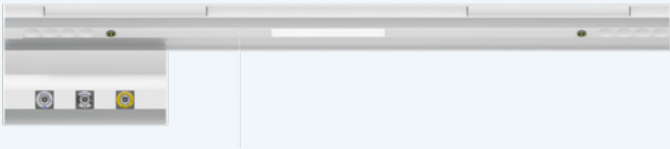
RN07 - DN0



RN07 - DN3J



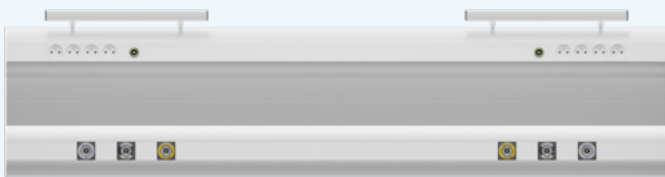
RN07 - DN1



RN07 - DN2



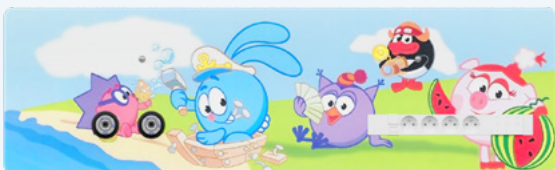
RN07 - DN3



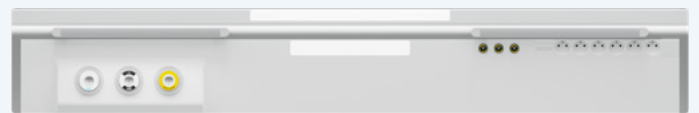
RN07 - DN3Z



ChildrenCare unit RN07



RN23



Technical parameters

Vertical design

Source column ZS07



Source column ZS07L



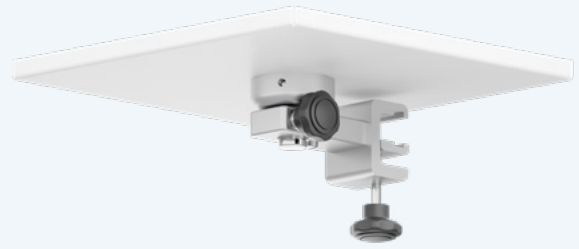
Characteristics	Horizontal design	Vertical design	Direct / night lighting	Indirect lighting	Medical gases installed	For patient rooms	For ICU
DN0	•		•	•		•	
DN3J	•			•	•	•	
DN1	•		•	•	•	•	
DN2	•		•	•	•	•	•
DN3	•		•	•	•	•	•
DN3Z	•				•	•	
ChildrenUnit	•		•	•	•	•	
RN23	•		•	•	•	•	
ZS07		•		•	•	•	•
ZS07L		•		•	•	•	

Accessories

Medical rail shelves

Medical rail shelves serve as storage space for small medical devices like IV pump, monitor etc. or at the vertical unit as storage space for common medical supplies being close at hand.

dimensions: 250 x 250 mm
load capacity: max. 5Kg



Infusion rack

An infusion rack can carry up to 4 infusion bags and bottles. These can be mounted on all types of bed head units.



FlowMeter – humidifier

It enables continuous regulation of the oxygen flow and at the same time its humidification using a reserve container with a liquid solution intended for this purpose.



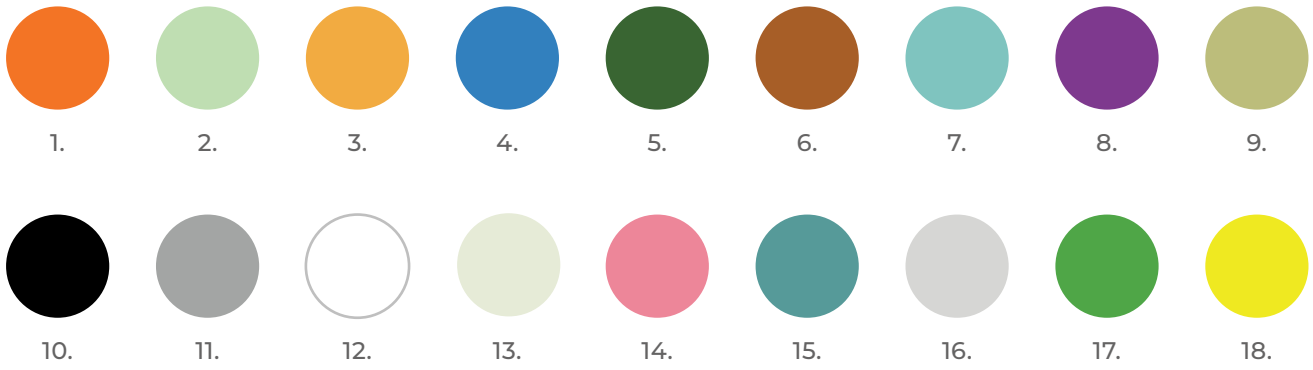
LED light

The LED light is designed for reading or simple examinations conducted at the patient's bed. It can be installed on the medical rail and its ergonomic design is the idea of daily aid for patients and medical staff.



Additional accessories are available in our catalogue and on our websites.

Possible colour design



Bed head units – models	DN0	DN3J	DN1	DN2	DN3	ZS07	ZS07L
Length	Standard length for 1 bed 1650 mm					1000 mm	1500 mm
Accessories	MZ Liberec accessories compatible with ISO medical rail						
Electrical devices	Outlets in different colours, designed according to national standards, RJ45, telephone, video cable, nurse call, etc. .						
Medical gas outlets	Medical gas outlets with proprietary square block design / Gas outlets from other manufacturers can be also installed						

