

OLYMPUS

Your Vision, Our Future

**VISERA
ELITE**

EXTENDING THE ART OF SURGERY TO NEW DIMENSIONS

Discover ENDOEYE FLEX 5 in HD.

NEW



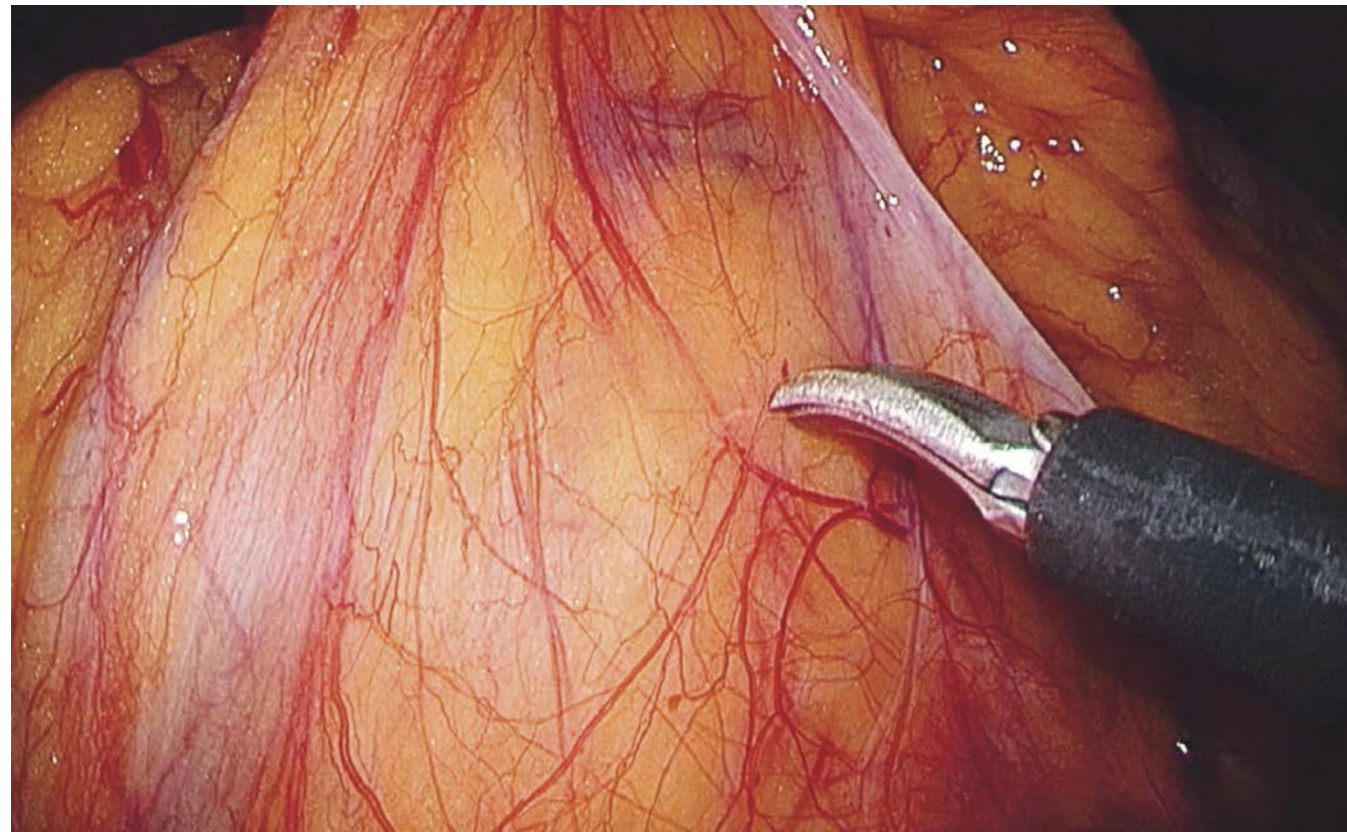
SEE WHAT YOU HAVE BEEN MISSING

Superior imaging and surgeon comfort as never before

- State-of-the-art HD image quality never seen before in any operating room.
- HD quality in only 5 mm diameter for maximum surgeon comfort and patient safety.
- Unrivalled ENDOEYE efficiency for superior imaging and maximum surgeon comfort.

5 mm HD

The world's first autoclavable 5 mm HD deflectable videoscope. The advanced chip-on-the-tip technology delivers brighter and clearer images.



ENDOEYE FLEX

Four-way angulation (100 degrees) of the tip allows an excellent view of the tip of the energy device for optimal control.

Focus-free

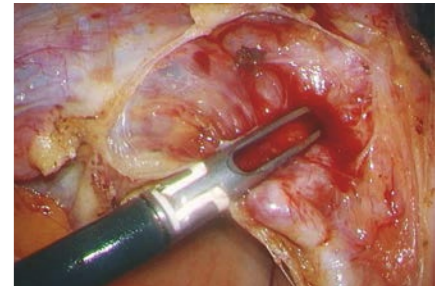
Advanced optical design provides greater depth of field, eliminating any need for manual focusing.

Fog-free

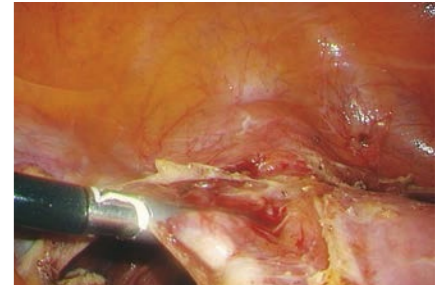
The unique heating function on the tip of the scope prevents the endoscopic view from fogging. Instead of wiping the scope before and during the procedure, this feature maintains a fog-free view from start to finish.

Customer benefits

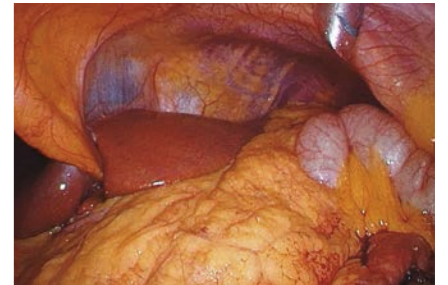
- Easy to use
- High-performance imaging
- Cost-effectiveness
- High-performance handling



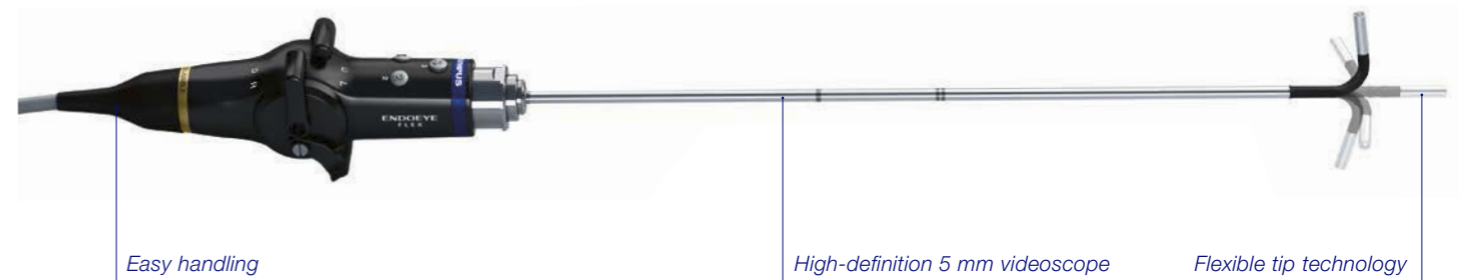
ENDOEYE FLEX view



Conventional scope view



Focus-free view



VISERA ELITE

Technical specifications

Videoscopes and Camera heads					
	ENDOEYE FLEX 5	ENDOEYE 5 (0° or 30°)	ENDOEYE FLEX 10	ENDOEYE 10 (0° or 30°)	Camera head CH-S190-XZ
Outer diameter	5.4 mm	5.4 mm	10 mm	10 mm	
HDTV	YES	YES	YES	YES	YES
Bright NBI	YES	YES	YES	YES	YES
CCD	Mono-CCD	Mono-CCD	Multi-CCD	Multi-CCD	Multi-CCD
CCD on the tip	YES	YES	YES	YES	NO
Four-way angulation of the tip	YES	NO	YES	NO	NO
All-in-one design	YES	YES	YES	YES	NO
Autofocus (focus-free)	YES	YES	YES	YES	NO
Fog-free	NO	NO	YES	YES	NO
Optical zoom	NO	NO	NO	NO	YES (0.9–1.8)
Autoclavable	YES	YES	YES	YES	YES
Remote buttons	3	3	3	3	3
Weight	290 g	310 g	420 g	310 g	340 g

Processor	
	VISERA Elite OTV-S190
HDTV	YES
Progressive scan (P) / interlace (I)	Progressive and interlace
NBI	Bright NBI
Compatible with PDD	YES
Compatible with mono- and multi-CCD camera heads	YES
Compatible with mono- and multi-CCD ENDOEYES	YES
Weight	11 kg

Light source	
	VISERA Elite CLV-S190
300 W xenon	YES
Emergency lamp	YES
NBI	Bright NBI
Compatible with PDD	YES
Weight	18 kg

Specifications, design and accessories are subject to change without any notice or obligation on the part of the manufacturer.

OLYMPUS

OLYMPUS EUROPA HOLDING GMBH
 Postbox 10 49 08, 20034 Hamburg, Germany
 Wendenstrasse 14–18, 20097 Hamburg, Germany
 Phone: +49 (0)40 237 730, Fax: +49 (0)40 230 761
 www.olympus-europa.com