

OLYMPUS[®]

Rhino-Laryngo Videoscope
ENF-VH2/ENF-V4
Optimal Design for ENT Examinations



ENF-VH2/ENF-V4

The Future Standard for ENT

Featuring the new pistol grip – an ergonomic control section specially designed for otolaryngological examinations – the ENF-VH2/V4 brings clinicians the same high-quality imaging and thin diameter offered by conventional Olympus models (ENF-VH/V3). With its reduced weight, improved operability, and easier insertion, this new grip minimizes strain and maximizes performance.

Easier Single-Hand Control

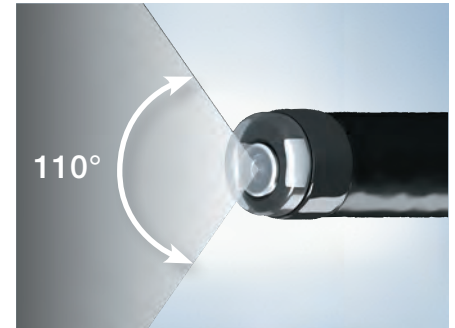
With the lever and switches laid out to facilitate single-handed operation, the new control section can be comfortably operated with either the right or left hand.



Proprietary Olympus Technology Improves Examination Capabilities and Simplifies Operation

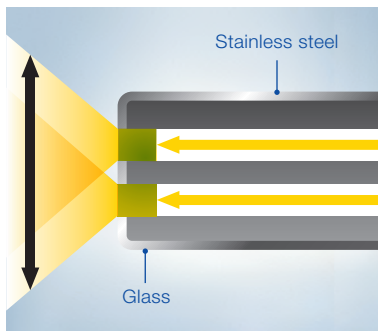
Wide field of view

The ENF-VH2 has a viewing angle of 110°. Along with HD resolution and exceptional illumination, every corner of the field can be thoroughly inspected.

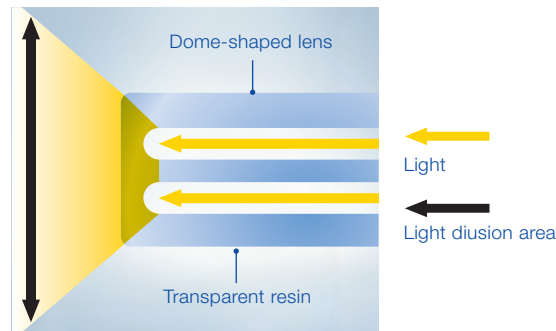


Exceptional luminosity

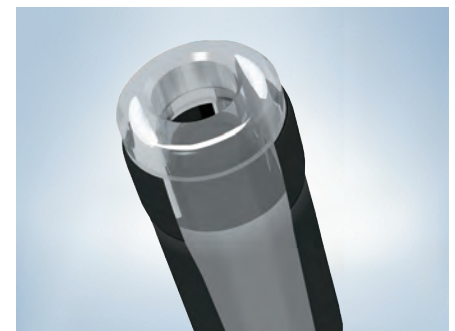
The small-diameter scope powerfully illuminates a broad area, providing detailed imaging of any lesions within the field of view. This exceptional luminosity is especially helpful when using Narrow Band Imaging (NBI).



Conventional scope – ENF-V2



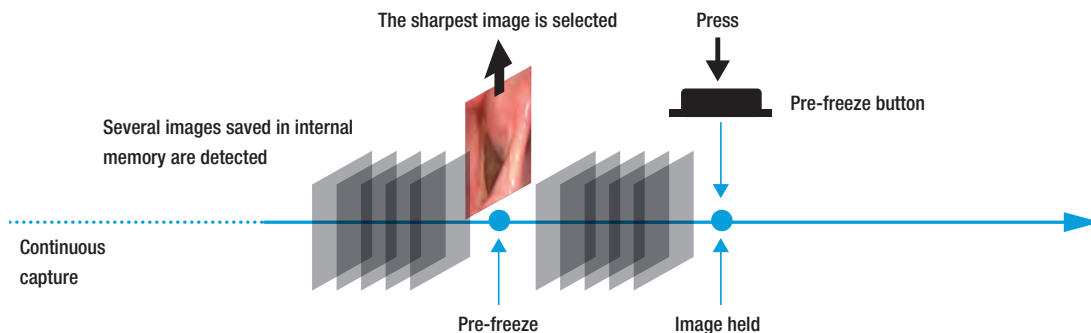
New scopes – ENF-VH2/V4



Dome-shaped transparent resin on the tip helps achieve wider light diusion.

Pre-freeze function

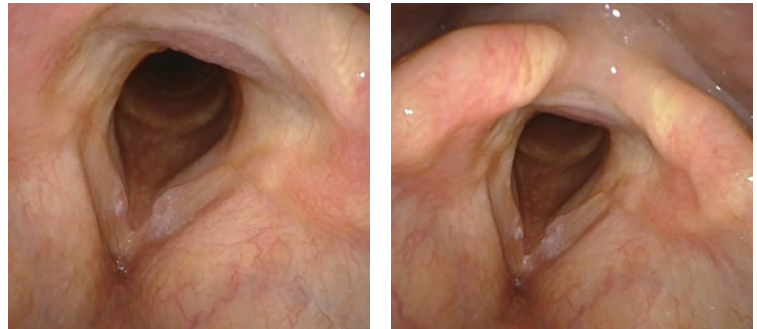
The scope's system continuously saves procedural images into memory. When the "freeze" button is pressed to capture a still image, the system automatically selects and saves the sharpest image of the desired view.



Astounding Image Quality

High Definition (HD)

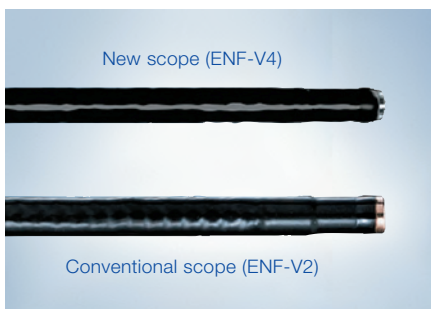
ENF-VH2 (HD): With advances in CCD technology, this scope features HD imaging, providing greater detail for thorough examinations.



Surprisingly Slim Diameter

ø 2.6 mm

ENF-V4 (slim design): Even with a slim distal-end diameter of just 2.6 mm, the ENF-V4 delivers the same exceptional image quality as conventional models (ENF-VH/V3). Additionally, minimal differences the diameters of its distal end and insertion tube make insertion into tight nasal passages much easier.



Enhanced visualization

Narrow Band Imaging (NBI)

NBI is a patented optical image technology that enhances the visibility of vessels and other tissue on the mucosal surface. NBI works by filtering the white light into specific light wavelengths, which are absorbed by hemoglobin and penetrate only the surface of human tissue. This highlights areas of increased vascularity which are normally difficult to distinguish.



ENF-VH2/ENF-V4

The Future Standard for ENT

New Design Optimized for ENT Examinations

The pistol grip ensures a secure, stable hold, allowing the control section to be held more comfortably. The new control section positions the insertion tube more linearly in relation to the patient. This helps reduce friction between the scope and the mucosa, facilitating a smoother and more efficient insertion than previous scopes. Remote switches have also been repositioned, further improving operability.



Control Section with 30% Reduced Weight*

In addition to reducing the overall size of the control section and the diameter of the universal cable, the weight of the control section has been reduced by 30% compared to prior Olympus models (ENF-VH/V3).

*Data on file

ENF-VH2/ENF-V4

Specifications		
Model	ENF-VH2	ENF-V4
Optical system		
Field of view	110°	90°
Direction of view	0° (forward viewing)	0° (forward viewing)
Depth of field	5 – 50 mm	3.5 – 50 mm
Insertion section		
Distal end outer diameter	3.9 mm	2.6 mm
Insertion tube outer diameter	3.6 mm	2.9 mm
Insertion section working length	300 mm	300 mm
Bending section		
Angulation range	up 130° / down 130°	up 130° / down 130°
Total length	500 mm	500 mm
NBI observation mode	Available	Available
Laser treatment	Available	Not available

Rhino-Laryngo Videoscope



Rhino-Laryngo Videoscope Olympus ENF-VH2



Rhino-Laryngo Videoscope Olympus ENF-V4

Accessories



ENT Scope Hanger* MAJ-2145

*Attaches to Olympus Compact Trolleys & Mobile Workstations

Compatible Video Processor



Visera Elite Video System Center OTV-S190



Evis Exera III Video System Center CV-190



Office Video System Center CV-170

Specifications, design and accessories are subject to change without any notice or obligation on the part of the manufacturer. Olympus is a registered trademark of Olympus Corporation, Olympus America Inc., and/or their affiliates. | Medical devices listed may not be available for sale in all countries.